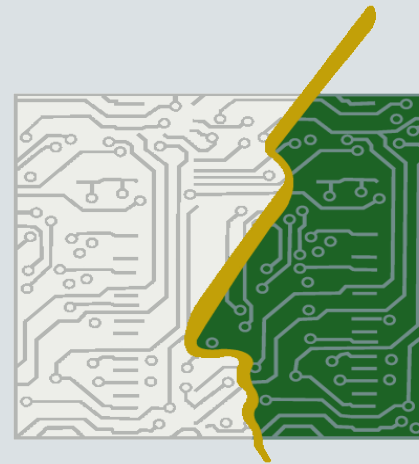


# A cooperation model between NASS and steep GmbH



**NASS**

NATIONAL ACADEMY FOR SCIENCE AND SKILLS  
الأكاديمية الوطنية للعلوم والمهارات

**PREPARING FOR A MODERN  
COMPETITIVE WORLD**

# Who is NASS



# Who is NASS

The **National Academy for Science & Skills - NASS** is an innovation-focused people-centered organization specialized in continuous development, offering tested channels towards leadership and competitive productivity.



# Who is steep

The **steep GmbH** is a international acting training and service company with focus in the automotive industry.

People education and skills development is a steep business.

The international automotive industry trusts in the steep competence.



# The mission

We empower a competitive workforce with professional, innovative, and technical capacities to become effective leaders and producers.



# The objective

- To develop a project that addresses important **community development** needs
- Project should contribute to alleviating the **unemployment** problem of the country
- **Sustainability** of the project is essential to ensure future continuity
- Project should contribute to advancing the **industrial community** in the country

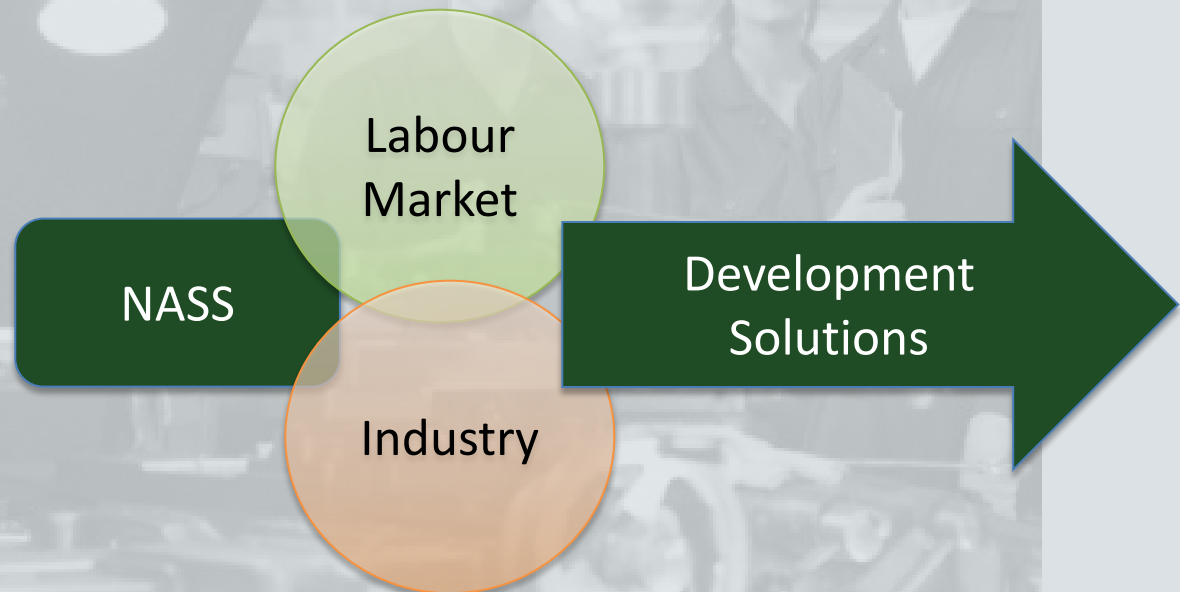


# Continuous development partner



# Continuous development partner

NASS is a partner for continuous development working with both enterprises and individuals on development solutions.





# NASS programs



# NASS programs

**NASS**

**School of Automotive  
Technology**

**School of Industrial  
Technology**

**School of Construction  
Technology**

**School of Facility  
Management**

**School of Innovation &  
Entrepreneurship**



# NASS programs

**NASS**

**School of Automotive  
Technology**



# NASS programs developed by steep

**School of Automotive  
Technology**

**Technology**

**Certified Service Mechanic**

**Certified Service Technician**



# NASS programs developed by steep

**School of Automotive  
Technology**

**After Sales**

**Certified Service Assistant**

**Certified Service Advisor**

**Certified Service Manager**

**Certified Service Manager**



# NASS programs developed by steep

**School of Automotive  
Technology**

**Sales**

**Certified Sales Consultant**

**Certified Sales Specialist**

**Certified Sales Professional**



# NASS programs developed by steep

**School of Automotive  
Technology**

**Management**

**Management Level 1**

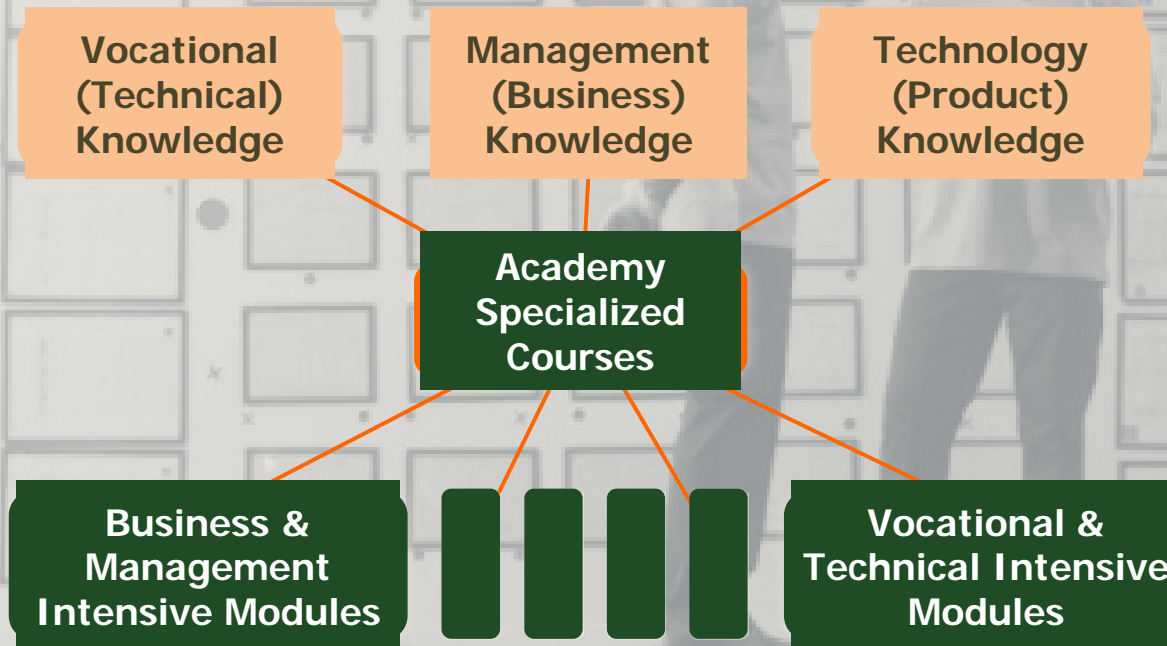
**Management Level 2**

**Management Level 3**



# NASS programs developed by steep

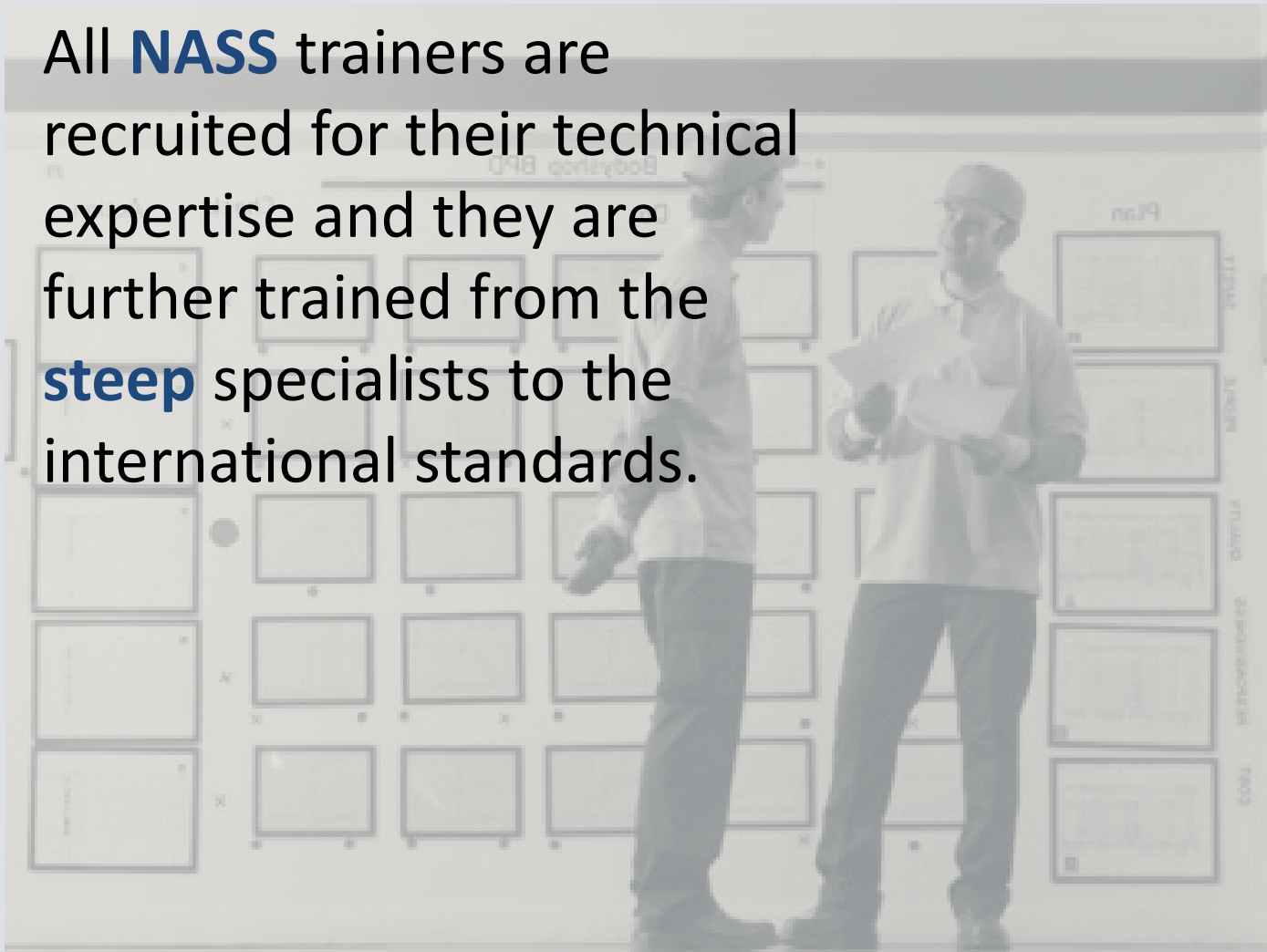
**All programs** integrate all 3 dimensions of a professional industrial resource.





# NASS staff

All **NASS** trainers are recruited for their technical expertise and they are further trained from the **steep** specialists to the international standards.



# NASS graduates

**NASS** graduates are qualified to become:

- professionals with high work ethics
- highly trained in the technical skills
- proficient in modern technological tools
- have developed organizational skills
- understand the importance of teamwork in the work environment



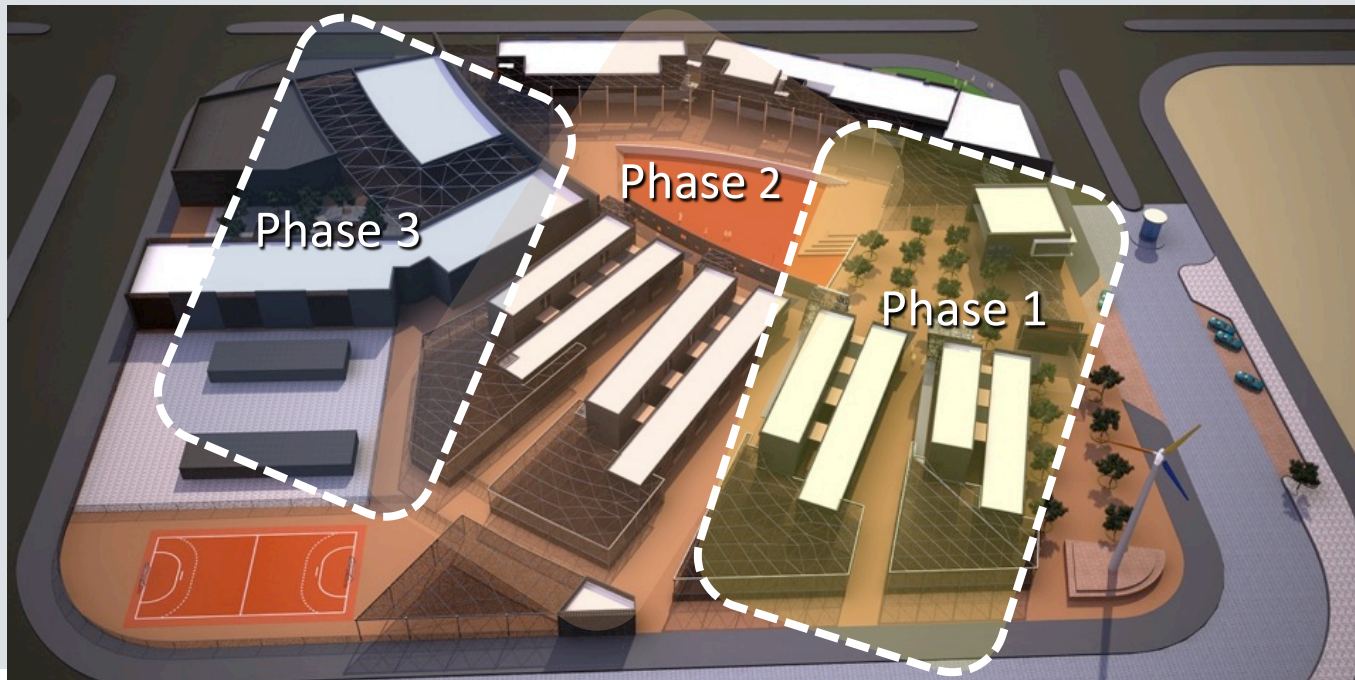
# NASS facility

**NASS** is a state of the arts facility equipped with up to date equipment.



# NASS campus

**NASS** campus sits on a 32,000 sqm site with over 12,000 sqm of planned functional space, built over the coming 3 years





# Phase 1 – 1. December 2012



# Phase 1 – 1. December 2012



**Thank you for you  
attention**

